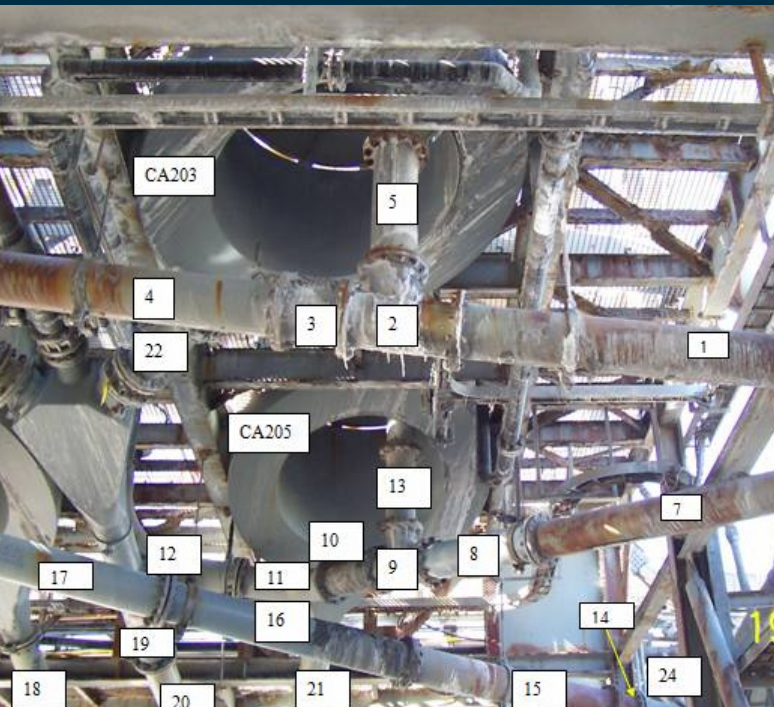


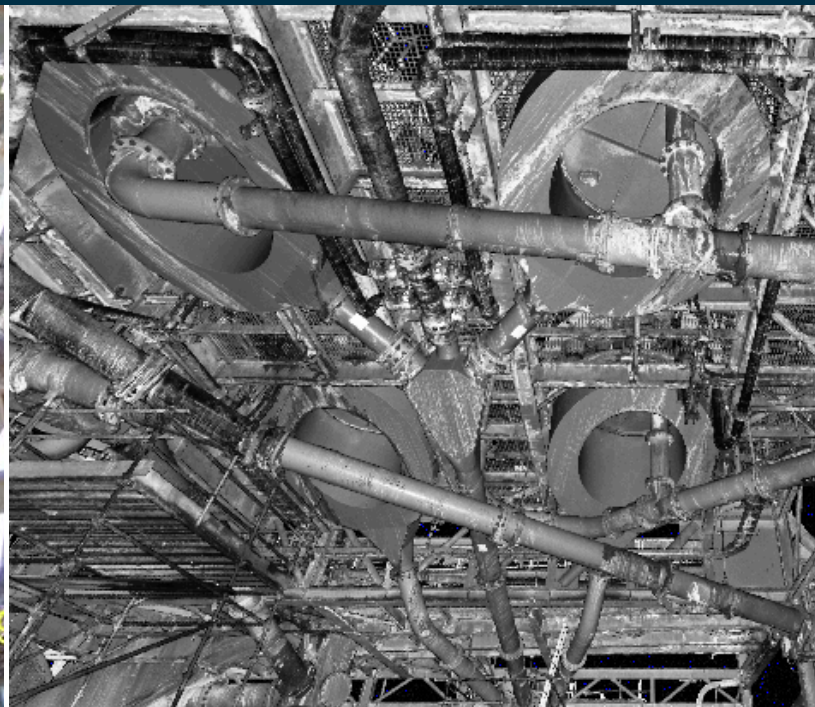


SURTECH
INTERNATIONAL
LIMITED

www.surtech-group.com



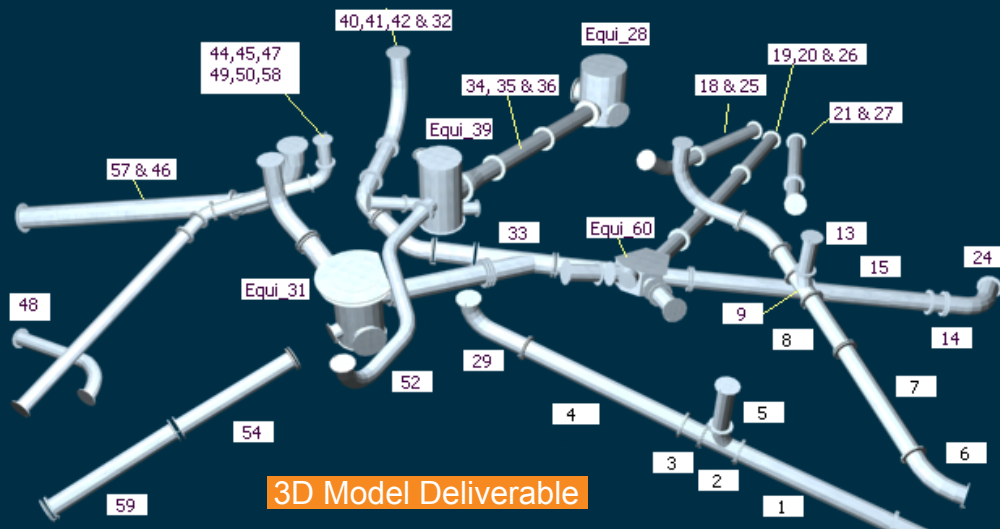
Scope Provided by Client



Laser Scan Image

CASE STUDY-6

Client : Confidential
Location : Australia
Deliverable : 3D MicroStation
Project Details :



3D Model Deliverable

Surtech was engaged by our client to provide an alternate solution to manual surveying for 189 spools located at 10 separate locations throughout the Nickel Refinery and at two separate remote off site pumping stations. Most of the spools were located in inaccessible places that would normally require scaffolding or the use of elevated work platforms. (Some spools were up to 15m above the scanner) The agreed scope of work was to laser scan the spools, produce 3D models of the nominated spool sections, deliver these to an engineering company to produce 2D fabrication drawings for offsite manufacture and then transport to site for final fit up in a tightly scheduled planned shutdown.

Scanning was completed on site in two and half days and the first models were delivered to the engineering company for further processing two (2) days after receipt of the scan data.

The client advised that all spools fitted without on site modifications and was very pleased with a hassle free result, completed in a tight time frame and within budget.